

Roll Cradle

Application Instructions



Pulp-Tec Limited
8 Grayhill Road,
Cumbernauld Glasgow
G68 9HQ United Kingdom

Tel: +44 (0) 1236 829 052
E-Mail: sales-uk@pulp-tec.com
Website: www.pulp-tec.com

Registered in Scotland
No. SC265 266
VAT No. 852 9903 93

Managing Director
Gary Shaw

Roll Cradles – Application Instructions

This guideline is the recommended packaging method for roll products:

- Use pallets of proper size and in good condition. Roll Cradles must never overhang the pallet.
- It is recommended that the Roll Cradles are used in the same direction on the pallet as the slats, not across.
- Make sure that the Roll Cradles used are suitable for the diameter of the rolls to be packed. Each new size should be tested.
- The Roll Cradles are delivered to you in pairs. Separate a pair to make two single cradles to be used on the bottom and top parts. For use between the layers of rolls, the pair is folded in the middle at the perforation.
- Stretch wrapping is strongly recommended for all pallet sizes.
- Each application may require specific methods of banding and wrapping. In case you have any questions, please contact our application engineers.
- In case you have any questions, please contact Pulp-Tec for further assistance on your particular application.

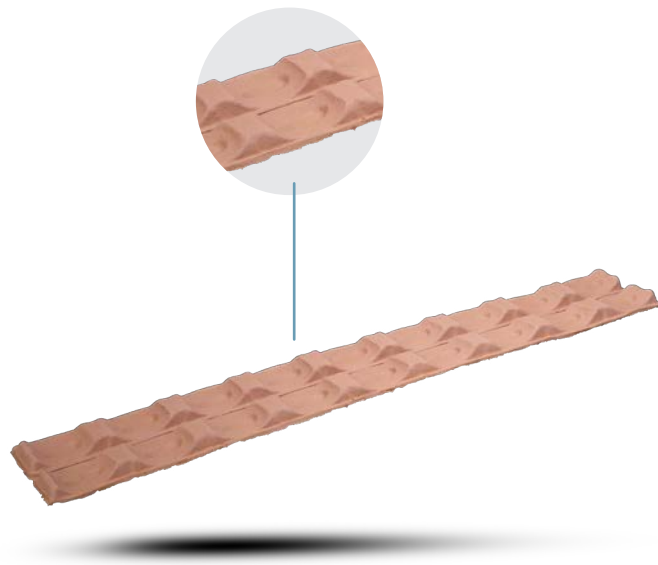
Typical packing of a pallet



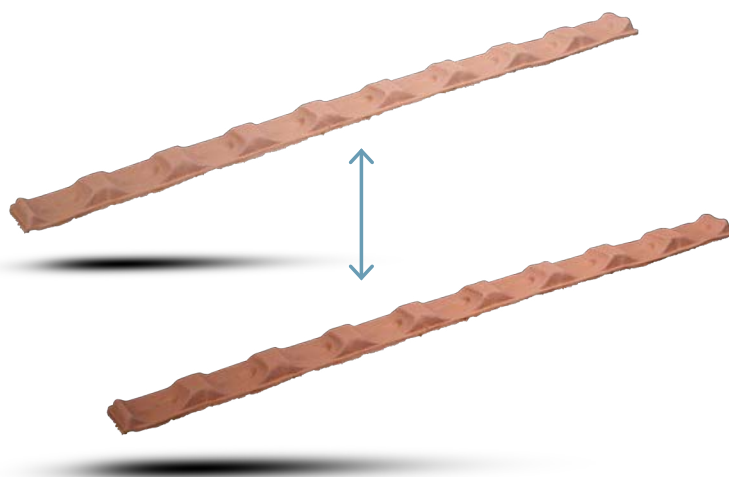
How to use your Roll Cradles

This guideline is the recommended packaging method for roll products:

1. Fold the cradle back and forth a few times on the perforation.



-
2. Pull part apart from side to side rather than front to back.



Building a pallet with Roll Cradles:

1. Place the separated cradles on the pallet laying parallel (when possible) to the deck boards, indented from the ends for added roll support and place rolls on the Roll Cradles starting with the center rolls ensuring cradles stay in place.



2. Once all rolls are placed on the first layer, fold 2 more cradle pairs for the second layer of rolls.



Building a pallet with Roll Cradles:

3. Once the desired pallet height is packaged with Roll Cradles, separate a Roll Cradle pair and invert them over the top rolls.



4. Place a piece of wood lattice (equal to or slightly longer than the cradle) on each of the inverted Roll Cradle. Place banding over top of wood and around Roll Cradles.

